



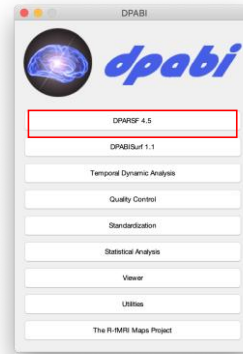
# DPABI Animal Data Processing

Chao-Gan YAN, Ph.D.  
严超赣

ycg.yan@gmail.com  
<http://rfmri.org>

Institute of Psychology, Chinese Academy of Sciences

1

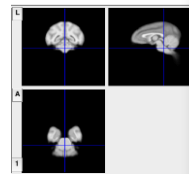


2

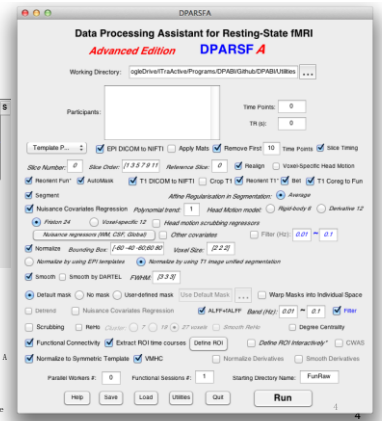


3

## DPARSF for Monkey Data



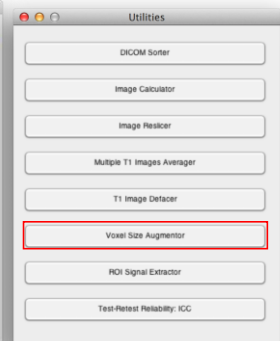
The monkey module is based on Rhesus Macaque Atlases for functional and structural imaging studies generated by Wisconsin ADRC Imaging Core. Please cite these papers when appropriate: McLaren, D.G., Koslitz, K.J., Oakes, T.R., Kronke, C.D., Kohan, S.G., Motochik, J.A., Ingram, B.K., Johnson, S.C., 2009. A population average MRI-based atlas collection of the rhesus macaque. *NeuroImage* 45, 52-69. McLaren, D.G., Koslitz, K.J., Kastman, E.K., Beedin, B.R., Johnson, S.C., 2010. Rhesus macaque brain morphometry: a methodological



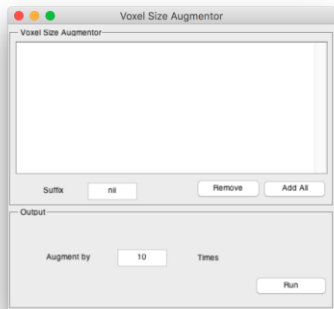
4



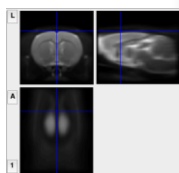
5



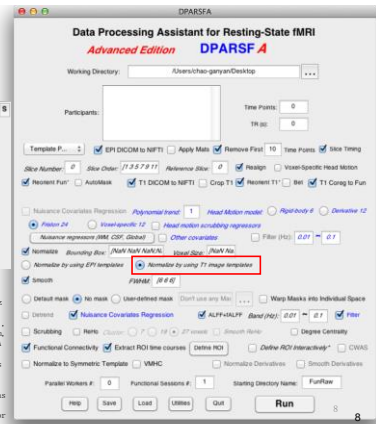
6



### DPARSF for Rat Data



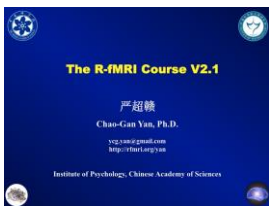
The Rat module is based on a Rat T2 template generated by Dr. Adam J. Schwarz et al. Please cite this paper when appropriate: Schwarz, A.J., Bannackert, A., Reese, T., Gozzi, A., Pazinos, G., Watson, C., Merlo-Pich, E.V., Bifone, A., 2006. A stereotaxic MRI template set for the rat brain with tissue class distribution maps and co-registered anatomical atlas: application to pharmacological MRI. NeuroImage 32, 538-550. (A T1 template was included as well. It's generated by normalizing 50 rats (two scans at P045 or P060) to the T2 template and then



7

8

### Further Help



<http://rfmri.org/wiki>



The R-fMRI Journal Club



Official Account: RfMRIlab

<http://rfmri.org/Course>

9

### DPABI特训营与DPABISurf加强营



定期举办，请关注<http://rfmri.org>

10

### 深度特训与数据分析



#### 静息态功能磁共振成像数据处理深度特训

从您见到这条消息开始，您便将有幸与 The R-MRI Lab 的静息态功能磁共振专家团队共同探索大脑的奥秘！深度跟组特训期间，您将亲身体验：

- 数据处理 专家指导下高效学习静息态功能磁共振成像数据处理
- 思路设计 与国际知名专家讨论研究思路
- 论文撰写 系统的 SCI 论文写作训练

<http://deepbrain.com>



#### 静息态功能磁共振成像深度数据分析

功能磁共振成像越来越成为一种主流的科研手段，然而功能磁共振的数据分析却是一项具有高度挑战性的工作。海量的原始数据，繁多的分析步骤，复杂的分析方法都让研究者们无所适从。恰当的分析方法可以从普通的数据中挖掘出富有创新性的结果，而不恰当的分析则可能让精心收集的数数据黯然失色。深度大脑公司联合 The R-MRI Lab 的专业脑功能成像研究团队推出一站式功能磁共振数据分析解决方案，助您从容应对功能磁共振数据带来的挑战。

### DPABISurf工作站

序号	名称	参数	市场参考价
1.	DPABI教育工作站 (Windows)	14英寸轻薄型专业级显示器(含笔记本屏幕)	¥ 8999
2.	DPABI教育工作站 (Linux/Windows)	20英寸超宽屏显示器(含13.4寸2.2K 16:9宽屏) CPU: Intel i7-8700K, 内存: 16GB, 硬盘: 1TB, 显卡: GTX 1080Ti, 操作系统: Windows 10/Ubuntu 18.04 LTS	¥ 9999
3.	DPABI教育工作站 (Windows)	15.6英寸超宽屏显示器(含笔记本屏幕)	¥ 2499

4.	DPABI教育工作站 (Mac)	14英寸超宽屏显示器(含笔记本屏幕) CPU: Intel i7-8700K, 内存: 16GB, 硬盘: 1TB, 显卡: GTX 1080Ti, 操作系统: Windows 10/Ubuntu 18.04 LTS	¥ 4499
5.	DPABI教育工作站 (Mac)	15.6英寸超宽屏显示器(含笔记本屏幕) CPU: Intel i7-8700K, 内存: 16GB, 硬盘: 1TB, 显卡: GTX 1080Ti, 操作系统: Windows 10/Ubuntu 18.04 LTS	¥ 4299
6.	DPABI教育工作站	15.6英寸超宽屏显示器(含笔记本屏幕) CPU: Intel i7-8700K, 内存: 16GB, 硬盘: 1TB, 显卡: GTX 1080Ti, 操作系统: Windows 10/Ubuntu 18.04 LTS	¥ 2499

<http://deepbrain.com/DPABICore>

12

## DPABI计算工作站

DPABI计算工作站	样式服务器	
2.	(Linux/Windows)	¥59999
DPABI Computational Core	20核AMD服务器处理器4114 2.2G *2.0 GCT/*2.0UPL/14M Turbo HT85W/ *15.6GB RDMA/64CPR/8 2066MT/s/ *4*1TB 2.5K RPM SAS/ 10T存储/ 200电 源_ RAID 0: H335_ DVD-RW 双电_ 三年维保	

<http://deepbrain.com/DPABICore>



**DPABISurf 并行计算:**

每天完成 **20** 个被试的皮层计算!!!

13

## The R-fMRI Lab



WeChat Official Account: RFMRILab

## Acknowledgments



Chinese Academy of Sciences  
Xi-Nian Zuo  
Hangzhou Normal University  
Yu-Feng Zang  
NYU Child Study Center  
E. Xavier Castellanos  
Child Mind Institute  
Michael P. Milham

- Funding**
- National Natural Science Foundation of China
  - National Key R&D Program of China
  - Chinese Academy of Sciences

15

**Thanks for your attention!**

16